

Enterprise-grade cyber defence for mobile operators

Securing devices against cyber threats is paramount as mobile technology evolves. BlackDice presents a two-pronged approach to mobile security with **BlackDice Angel** and **Retina** - comprehensive solutions designed to shield mobile devices and provide insightful analytics to mobile operators.

BlackDice Angel

Offers unparalleled, enterprise-grade cyber defence for mobile environments, delivering comprehensive protection across all devices and networks. It's designed to seamlessly secure user activity anytime, anywhere, ensuring peace of mind in an increasingly connected world.



SECURITY

Ironclad encryption and proactive threat monitoring for uncompromised data security.



SCALABILITY

Future-ready scalability, evolving seamlessly with your expanding mobile ecosystem.



SMARTER DEFENCE

AI-powered insights for anticipatory threat prevention and network resilience

Mobile APP UI

Customisable Interface:

Options for branding and customisation to align with operator aesthetics and user preferences.



Real-Time Notifications:

Alerts and updates to keep users informed about their security status on the go.

Intuitive Dashboard:

Easy-to-navigate dashboard providing quick access to security status, alerts, and actions required.

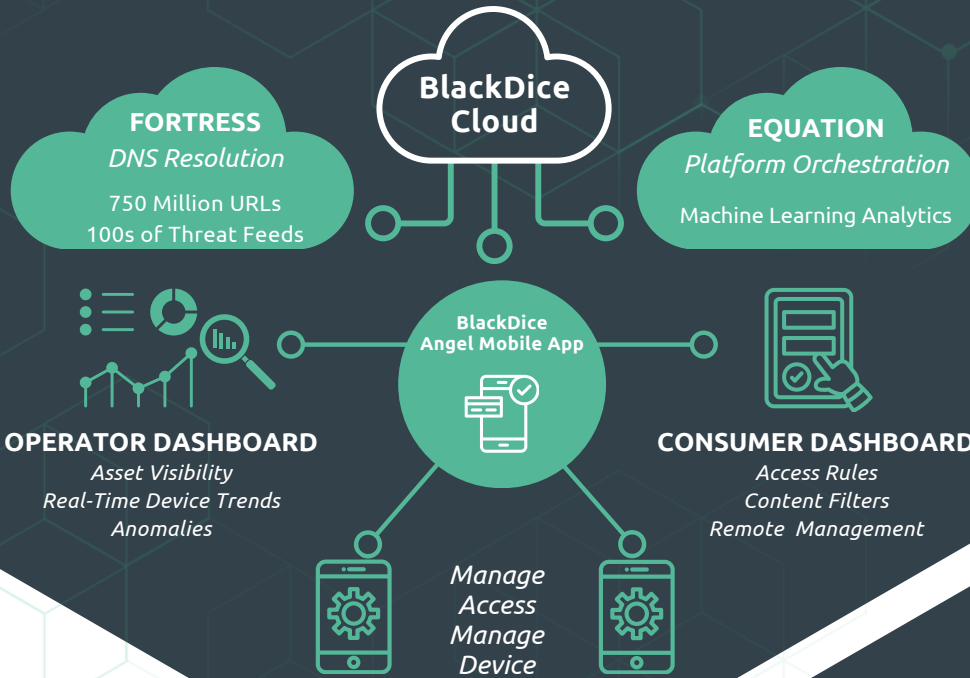


BlackDice

BUILDING TRUST IN A CONNECTED WORLD

Fact sheet:

Mobile offering



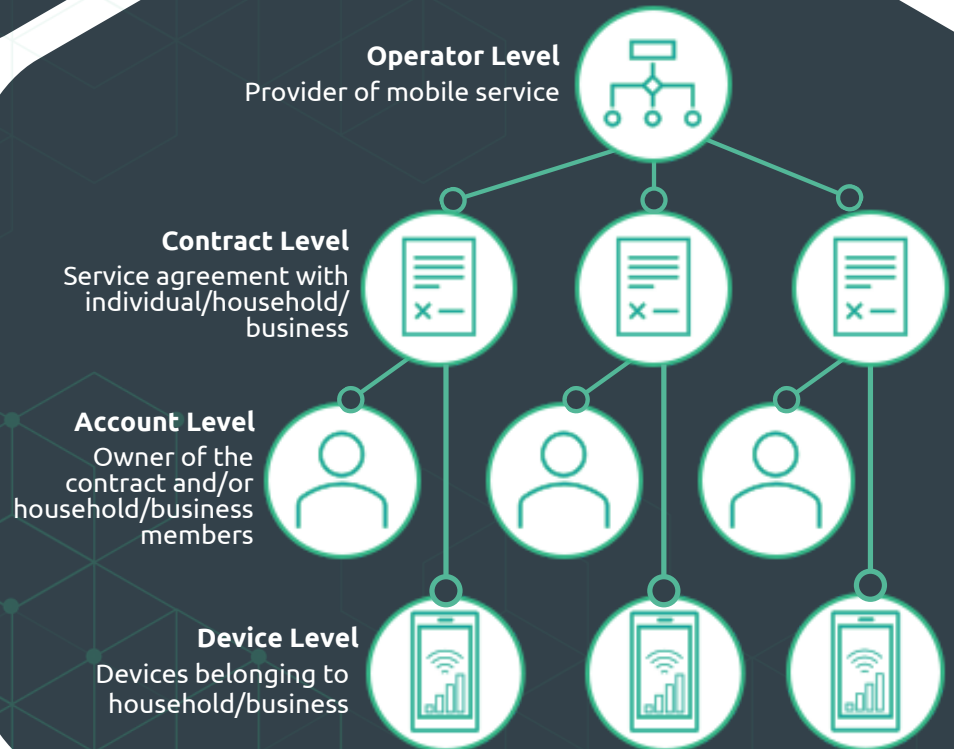
Cybersecurity Features

- Device Group Policies for unified control
- Customisable Access Schedules by time/ day
- Internet Pause/ Extend for focused time
- Whitelisting for approved sites
- Insightful Usage and Threat Statistics
- Comprehensive Blocking/Filtering Database

Mobile Device Management Features

- Full suite parental controls on router and mobile
- Disable system reset
- Activate system updates
- De-activate outgoing calls
- Manage Private and Work profiles
- Enforce password policy
- Pre-install applications
- Pre-configure applications
- Disable ability to delete applications
- Pre-define WiFi network settings
- Enable geo-location
- Remotely wipe device
- Remotely reset device
- De-activate camera
- De-activate Bluetooth and NFC

Data Hierarchy



Comprehensive protection on any device, across any network, at any time.

BlackDice revolutionises mobile cybersecurity, providing operators with a flexible, integrated solution that extends cutting-edge protection to customers on-the-go. It not only strengthens security beyond the home network but also enhances user engagement, positioning operators as *trusted guardians of digital safety*.

Contact us:

- blackdice.ai
- sales@blackdice.ai